



Regulators and Equipment 2024



Contents page

- [Calgaz Regulator Range](#)
- [700 Series Regulators](#)
- [800 Series Regulators](#)
- [1000 Series Regulators](#)
- [1700 Series Regulators](#)
- [2000 Series Regulators](#)
- [3850 Push Button Regulator](#)
- [4200 Series Regulators](#)
- [4220 Series Regulators](#)
- [Eco-Trigger Regulator](#)
- [FF20 Series Regulators](#)
- [R Series Regulators](#)
- [Equipment for HPC Cylinders](#)
- [Stem Connectors](#)
- [Gas Tubing](#)
- [Best Practices, Storage and Warranty](#)

Calgaz, the world's leading manufacturer of calibration gases and equipment is proud to offer the most comprehensive range of specialist regulators and equipment for non-refillable and high pressure gas cylinders.

Calgaz Global Regulator Range



700 Series



800 Series



1000 Series



1700 Series



2000 Series



3850 Push Button
Regulator



4200 Series



Eco-Trigger
Regulator



FF20 Series
Regulator



R- Series

700 Series	Single-stage preset fixed flow rate regulator. Available in Brass, hybrid Stainless Steel/Aluminium or Stainless Steel versions.
800 Series	Variflow regulators available in Brass/Stainless Steel versions.
1000 Series	High pressure dual-stage regulator offers a high degree of accuracy and control.
1700 Series	For low ppm reactive gases and high-purity gas mixtures, designed for low-flow rate and adjustable delivery pressure.
2000 Series	Demand-flow regulators designed for use with pumped instruments.
3850 Push Button Regulator	Single stage flow control regulator designed for delivering calibration gas to breath alcohol instruments
4200 Series	Trigger regulators designed to provide aerosol capability.
Eco-Trigger Regulator	Regulator designed for Eco-Bump cylinder.
FF20 Regulator	Regulators designed to fit the 1AL aerosol type cylinder.
R - Series	Single and double stage regulators designed for use with High Pressure Cylinders (HPC).

700 Series Regulators

Fixed Flow Regulators



702



705



713



715



715E*



718*



718E*



725



735

PERFORMANCE

	Inlet	Outlet	Preset Fixed Flow	Stages	Max Inlet Pressure	Max Outlet Pressure	Gauge/Knob
702	CGA 600	4.8mm (3/16") Barb	0.2 to 4.0 LPM	1	35 Bar (500 Psi)	4.5 Bar (65 Psi)	No gauge / No On/Off knob
705	5/8" - UNF C-10 Connection	4.8mm (3/16") Barb	0.2 to 6.0 LPM	1	70 Bar (1000 Psi)	4.1 Bar (60 Psi)	0-70 Bar (0-1000 Psi) No On/Off knob
713	CGA 600	4.8mm (3/16") Barb	0.2 to 6.0 LPM	1	35 Bar (500 Psi)	4.5 Bar (65 Psi)	0-70 Bar (0-1000 Psi)
715	5/8" - UNF C-10 Connection	4.8mm (3/16") Barb	0.2 to 6.0 LPM	1	70 Bar (1000 Psi)	4.1 Bar (60 Psi)	0-70 Bar (0-1000 Psi)
715E*	5/8" - UNF C-10 Connection	4.8mm (3/16") Barb	0.3 to 7.0 LPM	1	70 Bar (1000 Psi)	4.1 Bar (60 Psi)	0-70 Bar (0-1000 Psi)
718*	1/4" NPT Internal	4.8mm (3/16") Barb	0.2 to 6.0 LPM	1	150 Bar (2200 Psi)	4.1 Bar (60 Psi)	0-205 Bar (0-3000 Psi)
718E*	1/4" NPT Internal	4.8mm (3/16") Barb	0.05 to 15.0 LPM	1	150 Bar (2200 Psi)	4.5 Bar (65 Psi)	0-315 Bar
725	5/8" - UNF C-10 Connection	4.8mm (3/16") Barb	0.1 to 7.0 LPM	1	70 Bar (1000 Psi)	4.1 Bar (60 Psi)	0-70 Bar (0-1000 Psi)
735	5/8" - UNF C-10 Connection	4.8mm (3/16") Barb	0.1 to 7.0 LPM	1	70 Bar (1000 Psi)	4.1 Bar (60 Psi)	0-70 Bar (0-1000 Psi)

MATERIALS OF CONSTRUCTION

	Body	Piston	Piston Seal	Seat	Weight
702	Ni-Brass	Brass	Viton	Teflon	0.2kg (0.4lb)
705	Ni-Brass	Brass	Viton	Teflon	0.2kg (0.4lb)
713	Ni-Brass	Brass	Viton	Teflon	0.28kg (0.6lb)
715	Ni-Brass	Brass	Viton	Teflon	0.24kg (0.5lb)
715E*	Fully plated Ni-Brass	Brass	Viton	Teflon	0.24kg (0.5lb)
718*	Ni-Brass	Brass	Viton	Kel-F	0.32kg (0.7lb)
718E*	Stainless Steel	Stainless Steel	Viton	Teflon / PCTFE	0.35kg (0.8lb)
725	Stainless Steel/Aluminium	Stainless Steel	Viton	Teflon / Peek	0.13kg (0.3lb)
735	Stainless Steel	Stainless Steel	Viton	Teflon / PCTFE	0.24kg (0.5lb)

CYLINDERS COMPATIBILITY

	2AL	6D	6DM	7HP	8AL	10AL	5ELR	65ALR
702				✓				
705	✓	✓	✓		✓	✓		
713				✓				
715 / 715E*	✓	✓	✓		✓	✓		
718* / 718E*							✓	✓
725	✓	✓	✓		✓	✓		
735	✓	✓	✓		✓	✓		

* The connector is not included with the 718 or 718E and is charged extra.

*The 715E, 718 and 718E is not available from our Cambridge, MD USA facility.

800 Series Regulators

Variflow Regulators



801 *



802 *



803 *



804 *

PERFORMANCE						
	Inlet	Outlet	Variflow	Stages	Max Inlet Pressure	Max Outlet Pressure
801	C 10	4.8mm (3/16") Barb	0.5 Lit/Mn to 5.0 Lit/Mn	2	70 Bar (1000 Psi)	4.1 Bar (60 Psi)
802	1/4" NPT Female	4.8mm (3/16") Barb	0.5 Lit/Mn to 5.0 Lit/Mn	2	275 Bar (4000 Psi)	4.1 Bar (60 Psi)
803	C 10	4.8mm (3/16") Barb	0.5 Lit/Mn to 5.0 Lit/Mn	2	70 Bar (1000 Psi)	4.1 Bar (60 Psi)
804	1/4" NPT Female	4.8mm (3/16") Barb	0.5 Lit/Mn to 5.0 Lit/Mn	2	275 Bar (4000 Psi)	4.1 Bar (60 Psi)

MATERIALS OF CONSTRUCTION					
	Body	Piston	Piston Seal	Seat	Weight
801	Brass Forged	Brass Forged	Viton	Teflon	0.26kg (0.57lb)
802	Brass Forged	Brass Forged	Viton	Teflon	0.32kg (0.7lb)
803	Brass Forged /SS	Brass Forged /SS	Viton	Teflon	0.26kg (0.57lb)
804	Brass Forged /SS	Brass Forged /SS	Viton	Teflon	0.32kg (0.7lb)

CYLINDERS COMPATIBILITY							
	2AL	5ELR	6D	6DM	8AL	10AL	65ALR
801	✓		✓	✓	✓	✓	
802		✓					✓
803	✓		✓	✓	✓	✓	
804		✓					✓

* Not available from our Cambridge, MD USA facility

1000 Series Regulators

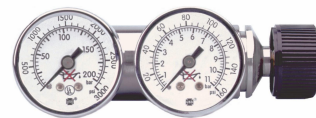
Fixed Pressure Regulators



1001



1002



1003

PERFORMANCE

	Inlet	Outlet	Stages	Max Inlet Pressure	Max Outlet Pressure	Gauge/Knob
1001	1/4-18" NPT	1/8" - 27 NPT	2	207 Bar (3000 Psi)	0-0.7 Bar (0-10 Psi)	0-207 Bar (0-3000 Psi)
1002	1/4-18" NPT	1/8" - 27 NPT	2	207 Bar (3000 Psi)	0-3.5 Bar (0-50 Psi)	0-207 Bar (0-3000 Psi)
1003	1/4-18" NPT	1/8" - 27 NPT	2	207 Bar (3000 Psi)	0-7 Bar (0-100 Psi)	0-207 Bar (0-3000 Psi)

MATERIALS OF CONSTRUCTION

	Body	Diaphragm	Piston Seal	Seat	Weight
1001	Ni-Brass	Stainless Steel	Viton	Teflon	0.63kg (1lb)
1002	Ni-Brass	Stainless Steel	Viton	Teflon	0.63kg (1lb)
1003	Ni-Brass	Stainless Steel	Viton	Teflon	0.63kg (1lb)

CYLINDERS COMPATIBILITY

	2AL	5ELR	6D	8AL	10AL	65ALR
1001	✓	✓	✓	✓	✓	✓
1002	✓	✓	✓	✓	✓	✓
1003	✓	✓	✓	✓	✓	✓

1700 Series Regulators

Single Stage Regulators



1767



1768



1781



1782

PERFORMANCE

	Inlet	Outlet	Flow Rate	Flow Rate Control	Stages	Max Inlet Pressure	Gauge/Knob
1767	5/8" - 18 UNF	4.8mm (3/16") Tubing	0.1 to 6.0 LPM	Factory Preset	1	70 Bar (1000 Psi)	0-70 Bar (0-1000 Psi)
1768	5/8" - 18 UNF	4.8mm (3/16") Tubing	0.3 to 2.0 LPM	Adjustable	1	70 Bar (1000 Psi)	0-70 Bar (0-1000 Psi)
1781	5/8" - 18 UNF	4.8mm (3/16") Tubing	0.1 to 6.0 LPM	Factory Preset	1	70 Bar (1000 Psi)	0-70 Bar (0-1000 Psi)
1782	5/8" - 18 UNF	4.8mm (3/16") Tubing	0.3 to 2.0 LPM	Adjustable	1	70 Bar (1000 Psi)	0-70 Bar (0-1000 Psi)

MATERIALS OF CONSTRUCTION

	Body	Diaphragm	Piston Seal	Seat	Weight
1767	Ni-Brass	Stainless Steel	Viton	Viton	0.63kg (1lb)
1768	Ni-Brass	Stainless Steel	Viton	Viton	0.63kg (1lb)
1781	Ni-Brass	Stainless Steel	Buna N	Buna N	0.63kg (1lb)
1782	Ni-Brass	Stainless Steel	Buna N	Buna N	0.63kg (1lb)

CYLINDERS COMPATIBILITY

	2AL	6D	8AL	10AL
1767	✓	✓	✓	✓
1768	✓	✓	✓	✓
1781	✓	✓	✓	✓
1782	✓	✓	✓	✓

2000 Series Regulators

Demand Flow Regulators



DFR 2001



DFR 2003



DFR 2004



DFR 2006



DFR 2007



DFR 2008 *

PERFORMANCE							
	Inlet	Outlet	on-Demand Flow Rate	Stages	Max Inlet Pressure	Demand Pressure	Gauge/Knob
DFR 2001	5/8 - UNF C-10	4.8mm (3/16") Tubing	0 to 3 LPM	2	70 Bar (1000 Psi)	5.6mm (3" H2O)	0-70 Bar (0-1000 Psi)
DFR 2003	1/4" NPT Female*	4.8mm (3/16") Tubing	0 to 3 LPM	2	150 Bar (2200 Psi)	5.6mm (3" H2O)	0-207 Bar (0-3000 Psi)
DFR 2004	5/8 - UNF C-10	4.8mm (3/16") Tubing	0 to 3 LPM	2	70 Bar (1000 Psi)	5.6mm (3" H2O)	0-70 Bar (0-1000 Psi)
DFR 2006	1/4" NPT Female*	4.8mm (3/16") Tubing	0 to 3 LPM	2	150 Bar (2200 Psi)	5.6mm (3" H2O)	0-207 Bar (0-3000 Psi)
DFR 2007	CGA 600	4.8mm (3/16") Tubing	0 to 3 LPM	2	35 Bar (500 Psi)	5.6mm (3" H2O)	0-35 Bar (0-500 Psi)
DFR 2008	5/8 - UNF C-10	4.8mm (3/16") Tubing	0 to 3 LPM	2	70 Bar (1000 Psi)	5.6mm (3" H2O)	0-70 Bar (0-1000 Psi)

* Various connection including BS & CGA

MATERIALS OF CONSTRUCTION						
	Body	Diaphragm	Piston	Piston Seal	Seat	Weight
DFR 2001	Ni-Brass	Buna	Ni-Brass	PTFE	Buna	0.63kg (1lb)
DFR 2003	Ni-Brass	Buna	Ni-Brass	PTFE	Buna	0.63kg (1lb)
DFR 2004	Ni-Brass	PVC	Ni-Brass	PTFE	Viton	0.63kg (1lb)
DFR 2006	Ni-Brass	PVC	Ni-Brass	PTFE	Viton	0.63kg (1lb)
DFR 2007	Ni-Brass	Buna	Ni-Brass	PTFE	Buna	0.63kg (1lb)
DFR 2008	Stainless Steel	Nitrile	Stainless Steel	Viton	Teflon/PCTFE	0.49kgs

CYLINDERS COMPATIBILITY								
	2AL	6D	6DM	7HP	8AL	10AL	5ELR	65ALR
DFR 2001	✓	✓	✓		✓	✓		
DFR 2003							✓	✓
DFR 2004	✓	✓			✓	✓		
DFR 2006							✓	✓
DFR 2007				✓				
DFR 2008	✓	✓	✓		✓	✓		

* Can only be shipped from our Stoke, UK facility

3850 Push Button Regulator

The easy to use PBR (Push Button Regulator) is a single stage flow control device, designed for delivering calibration gas to breath alcohol instruments and for other non-reactive gas applications. With preset flow rates up to 23 LPM the PBR is the most versatile regulator of its type on the market.

Cylinder Compatibility
2AL
2ALR
6D
6DM
8AL
10AL
10ALR

Gas Type Suitability
Ethanol
Non-Reactive Mixtures
Non-Reactive Pure Gas

Performance	
Inlet	C-10 Connection (5/8 - 18" UNF)
Outlet	1/8" (3.2mm) Barb
Fixed Flow	0.2 to 23.0 LPM
Stages	1 Stage
Max Outlet Pressure	4.1 Bar (70 PSI)
Max Inlet Pressure	70 Bar (1000 PSI)
Gauge	0-70 Bar (0-1000 psi)
Weight	0.32 Kg (0.5 LB)
Warranty	24 months
Recommended Replacement	2 years



Material of Construction	
Body/Outlet	Electroless Nickel Plated Brass
Piston	Electroless Nickel Plated Brass
Cap	Aluminium
Piston Seal	PTFE (Teflon)
O-Ring Seals	Fluorocarbon (Viton)

4200 Series Regulators

Trigger Regulators



4205



4206



4210



4211

PERFORMANCE						
	Inlet	Outlet	Fixed Flow	Stages	Max Inlet Pressure	Gauge
TRIGGER 4205	C10 (5/8" - 18 UNF)	4.8mm (3/16") Tubing	0.2 to 4.0 LPM	1	70 Bar (1000 Psi)	None
TRIGGER 4206	C10 (5/8" - 18 UNF)	4.8mm (3/16") Tubing	14.0 to 18.0 LPM	1	70 Bar (1000 Psi)	None
TRIGGER 4210	C10 (5/8" - 18 UNF)	4.8mm (3/16") Tubing	0.2 to 6.0 LPM	1	70 Bar (1000 Psi)	0-70 Bar (0-1000 Psi)
TRIGGER 4211	C10 (5/8" - 18 UNF)	4.8mm (3/16") Tubing	14.0 to 18.0 LPM	1	70 Bar (1000 Psi)	0-70 Bar (0-1000 Psi)

MATERIALS OF CONSTRUCTION				
	Body	Piston Seal	Seat	Weight
TRIGGER 4205	Ni-Brass	Viton	Teflon	0.35kg (0.7lb)
TRIGGER 4206	Ni-Brass	Viton	Teflon	0.35kg (0.7lb)
TRIGGER 4210	Ni-Brass	Viton	Teflon	0.35kg (0.7lb)
TRIGGER 4211	Ni-Brass	Viton	Teflon	0.35kg (0.7lb)

CYLINDERS COMPATIBILITY					
	2AL	6D	6DM	8AL	10AL
TRIGGER 4205	✓	✓	✓	✓	✓
TRIGGER 4206	✓	✓	✓	✓	✓
TRIGGER 4210	✓	✓	✓	✓	✓
TRIGGER 4211	✓	✓	✓	✓	✓

4220 Series Regulators

Trigger Regulators for 5ELR and 5E cylinders



PERFORMANCE						
	Inlet	Outlet	Fixed Flow	Stages	Max Inlet Pressure	Gauge
TRIGGER 4223	CGA 350	5.8mm (0.23") hose barb	6.0 LPM	2	207 Bar (3000 Psi)	207 Bar (3000 Psi)
TRIGGER 4226	CGA 600	5/32"compression fitting	14.0 LPM	2	207 Bar (3000 Psi)	207 Bar (3000 Psi)

MATERIALS OF CONSTRUCTION				
	Body/Bonnet	Piston	Seat	Weight
TRIGGER 4223	Ni-Brass	Brass	Buna	0.98kg (2.2lb)
TRIGGER 4226	Ni-Brass	Brass	Buna	0.98kg (2.2lb)

GAS SUITABILITY				
	Non-Reactive	H2S & SO2	NO & NO2	Cl2 , HCL, NH3, PH3,SiH4 & HCN
TRIGGER 4223	Suitable	Suitable	Not recommended	Not recommended
TRIGGER 4226	Suitable	Suitable	Not recommended	Not recommended

CYLINDER COMPATIBILITY		
	5E	5ELR
TRIGGER 4223	✓	✓
TRIGGER 4226	✓	✓

Eco-Trigger Regulator

For use with the Eco-Bump Cylinder

The Eco-Trigger Regulator has been designed to meet the needs of the Eco-Bump cylinder. Offering a simple and easy solution for bump or function testing. Operation is by an easy to use thumb operated paddle trigger.



Cylinder Compatibility
Eco-Bump

Gas Type Suitability	
Non-Reactive	Suitable
H2S	Suitable
Quad Mixtures	Suitable

Performance	
Inlet Pressure	1305 psig (90 bar)
Inlet	C10
Outlet	3/16" barbed
Plating	Ni-Brass
Flow	Fixed flow 0.5 to 5.0 LPM preset
Warranty	24 months
Recommended Replacement	2 years

Material of Construction	
Body/Piston	Brass Forged
Bonnet	Brass Forged
Body Seals/ Piston Seals	Viton
Main Valve Seat	Teflon/Peek

FF20 Series Regulators

Fixed Flow Regulators for 1AL Cylinders



FF20 Septum *



FF20 Stem Flow *



FF20 Flow Meter *



FF20 Nozzle *

PERFORMANCE						
	Inlet	Outlet	Flow	Stages	Max Inlet Pressure	On /Off Knob
FF20 Septum	7/16" x 28 UNF -2B Aerosol	Septum	-	1	11 bar	Yes
FF20 Stem Flow	7/16" x 28 UNF -2B Aerosol	4mm Barb - HDPE	0.25 to 1.0 LPM	1	11 bar	Yes with Brass 28 bar max gauge
FF20 Flow Meter	7/16" x 28 UNF -2B Aerosol	4mm Barb - HDPE	0.5 to 1.0 LPM	1	11 bar	Yes

MATERIALS OF CONSTRUCTION							
	Body	Needle	Seals	Flow Meter	Plating	Knob	Weight
FF20 Septum	Ni-Brass	Brass	Nitrile	-	Ni-Brass	Aluminium	0.06kg (0.13lb)
FF20 Stem Flow	Aluminium - SS 303	SS 303	Viton	Acrylic	Ni-Brass	Aluminium	0.14kg (0.31lb)
FF20 Flow Meter	Ni-Brass	Brass	Nitrile	Acrylic	Ni-Brass	Aluminium	0.14kg (0.31lb)

GAS SUITABILITY		
	Non-Reactive	H2S & SO2
FF20 Septum	Suitable	Suitable
FF20 Stem Flow	Suitable	Suitable
FF20 Flow Meter	Suitable	Suitable
FF20 Nozzle	Suitable	Suitable

CYLINDERS COMPATIBILITY		
	1ALE	1ALU
FF20 Septum	✓	
FF20 Stem Flow	✓	
FF20 Flow Meter	✓	
FF20 Nozzle		✓

* Not available from our Cambridge, MD USA facility

R Series Regulators

HPC Single and Two Stage Regulators



R21 *



R31 *

Features

	Configuration	Inlet Pressure	Outlet Pressure	Body Port Size	Material	Stability	Weight
R21B	Single Stage	200bar (2900psi)	3.5 or 7 bar	1/4" NPT(F)	NI-Brass	Non reactive Gases	1.8 kg (4 lbs)
R21S	Single Stage	200bar (2900psi)	3.5 or 7 bar	1/4" NPT(F)	Stainless Steel	Reactive Gases	1.8 kg (4 lbs)
R31B	Two Stage	200bar (2900psi)	3.5 or 7 bar	1/4" NPT(F)	NI-Brass	Non-Reactive Gases	2.1 kg (4.6lbs)
R31S	Two Stage	200bar (2900psi)	3.5 or 7 bar	1/4" NPT(F)	Stainless Steel	Reactive Gases	2.1 kg (4.6lbs)

Temperature Range: 40°F to 165°F (-40°C to 74°C)

Temperature Range 2 x 10 atm.cc/sec He

Connectors 1/4" NPT(F) to available with British Standard (BS), US CGA or DIN

** These photos are for illustration only. The actual supply of products may differ.*

** Not available from our Cambridge, MD USA facility*

Equipment for HPC Cylinders

Can be used with NRC's and HPC Cylinders

Calgaz HPC products can be supplied with a range of valves including BS, DIN and CGA. Cylinders are normally sold outright and so not subject to rental or the need to return.



R21 *



R31 *



718



802 *



804 *



1001



1002



1003



DFR 2003



DFR 2006

* Not available from our Cambridge, MD USA facility

Stem Connectors

Range of US, UK and European adaptors

Commonly used with Reactive gases



CGA 330



CGA 580



BS 15 *

Commonly used with Non Reactive gases



CGA 350



DIN 10 *



BS 3 *



BS 4 *

Calgaz is the world's leading manufacturer of calibration gases and equipment. We are proud to offer the most comprehensive range of specialist regulators and associated equipment for non-refillable (NRC) and high pressure (HPC) refillable gas cylinders.

As part of our range we can supply a variety of cylinder valve connectors (Stem connectors). All the connectors supplied conform to either British (BS), US (CGA) or European (DIN) standards. Calgaz is able to supply

- BS3, BS4, and BS15
- CGA330, CGA350 and CGA580
- DIN 10

All connectors are approved for a working pressure up to 200 Bar and can be supplied in Brass or Stainless Steel and are generally ¼" NPT inlet with a range of outlets to meet your requirements.

All stem connectors carry a 24 month warranty and we recommend replacing them after two years of service and can often be shipped to you the next working day.

** Not available from our Cambridge, MD USA facility*

Gas Tubing

Transfer of gas



TU 1596 - PVC
Tubing



TU 1670 - PVC lined with
Teflon (Tygon)

Calgaz supplies two types of tubing in a range of lengths including 2ft (0.6m), 3ft (1m), 10ft (3m), and 100ft (30m).

The PVC tubing is recommended for use with applications involving non-reactive gases.

For reactive gases, Tygon tubing performs better with reduced gas absorption due to the inner teflon coating.

Calgaz Global Standards			
Name	Description	Dimension	Application
TU -1596	PVC Tubing	Int Dia = 4.8mm Ext Dia = 6.4mm	Non-reactive mixtures only
TU -1670	PVC Tubing lined with Teflon (Tygon)	Int Dia = 4.8mm Ext Dia = 7.9 mm	Non-reactive and Reactive mixtures

Best Practices, Storage and Warranty

Guidance Only

Introduction

This information provided is for guidance only. For detailed safety information ALWAYS refer to the appropriate SDS datasheet.

Recommended Storage

Non refillable cylinders should be firmly secured to prevent falling or being knocked-over. When a gas cylinder is empty or not being used, ensure that the regulator is removed and the valve protector cap is secured in place.

Take measures to protect cylinders against physical damage. Where flammable gases are stored, all lighting and any other electrical equipment including tools used in that area must be flameproof and suitable for a hazardous area.

Cylinders must be protected from the environment and preferably kept at room temperature approximately 21°C (70°F). Cylinders should be stored in secure, dry, well-ventilated areas, and in fire resistant rooms away from sources of heat, ignition, and direct sunlight. Cylinders should never be subjected to conditions above 50°C or below -20°C. Aluminium Cylinders that have been subjected to fire or extreme heat should be safely vented if possible and disposed of immediately.

Please follow local regulations with regards to the segregation of flammable, non-flammable and oxidizing gases.

Moisture

When cylinders are stored in a cool environment there is a possibility that by moving them into a warm humid environment that moisture can form in the valve. Please take all measures to keep dry and remove any moisture from the cylinder prior to use.

When attaching a regulator please ensure the regulator is switched to the “on” position** to allow the gas to flow when the valve is depressed ensuring that any dust, debris or moisture is forced out of the valve through the cylinder and into the atmosphere. Failure to follow this process may lead to moisture entering the cylinder when the valve is open.

** Please ignore if there is no “on” position on the regulator i.e. DFR

Safety

When attaching a regulator to a non-refillable cylinder please ensure:

- There is no corrosion on the valve or regulator and that the correct regulator is selected for the application.
- The thread on the regulator is not worn, is intact and undamaged
- There is no dirt or debris in the valve or regulator including the gauge.
- That you always wear safety glasses and other necessary PPE when handling cylinders
- The cylinder is disposed of correctly and recycled as required

Non-refillable cylinders are designed for one-time use and **MUST never be refilled or re-used.**

Warranty

Most regulators carry a 24 month warranty and we recommend replacing them after 2 years of service. Full details can be found on the individual regulator page or www.calgaz.com.



Contact Details

Americas

Global Headquarters

Houston, TX, USA
+1 713 624 8000

Customer Service and Manufacturing Facility

Cambridge, MD, USA
+1 800 638 1197

Europe, Middle East & Africa

Customer Service, Sales and Manufacturing Facility

Stoke-on-Trent, United
Kingdom
+44 0808 164 8897

Middle East Sales

Dubai, UAE
+971 56 131 2346

South East Asia & Australia

Customer Service and Distribution

Singapore
+65 3163 9392

China

Customer Service and Distribution

Shanghai
+86 21 6090 3711

info@calgaz.com

www.calgaz.com